



Big Sky

Sotheby's
INTERNATIONAL REALTY

Discover The Mountain's Finest

European Craftsmanship and Design | A Luxury Mountain Home in Big Sky, Montana





European Craftsmanship in Big Sky

LHM Mountain Homes — where Scandinavian mountain-building tradition meets contemporary European interior design and handcrafted precision.

Each structural element: walls, beams, and joinery was engineered and built by hand in Europe, then reassembled on-site in Montana with uncompromising accuracy, uniting Norwegian craftsmanship with the natural rhythm of the Big Sky mountain landscape.



Set within the alpine landscape of Big Sky's private Spanish Peaks Mountain Club, the house represents the essence of refined mountain living — combining Scandinavian craftsmanship, natural materials, and contemporary interior design.



Residence details

Location:	Spanish Peaks Mountain Club, 2673 Ousel Falls Road Big Sky, Montana
Plot Size:	2.52 acres
Living Area:	5,405 sq ft
Bedrooms:	4
Sleeps:	12
Bathrooms:	5.5
Garage:	2-car
Floors:	2
Decks:	3 (including private bedroom deck and outdoor hot tub area)
Balcony:	1
Construction:	Hybrid log-frame structure engineered and handcrafted in Europe
Interiors:	Fully furnished and decorated prior to delivery — cabinetry, furniture, lighting, and decor included
Status:	Completed / turn-key ready
Price:	\$12,900,000

Architecture Without Imitation

The exterior reveals structure, depth, and light — handcrafted timber, natural Norwegian stone, and expansive European windows in balanced composition.









The Discipline of Detail

Created as a complete living environment, the home is fully furnished and finished, with every element thoughtfully designed and in place for your arrival.



Kitchen & Dining

Precision craftsmanship is felt in every movement — the weight of a drawer, the softness of a hinge, the smooth texture of oak and stone, and the gentle glow within each detail.







Bedrooms

Four bedrooms continue the home's palette of natural materials — oak, linen, and soft lighting. Each space is designed for quiet retreat, where handcrafted details and mountain views define a sense of understated comfort.





Living & Lounge Spaces

The main living room opens toward the mountain horizon, its double-height volume filled with natural light and warm materials. Oak, leather, and stone define a space for calm conversation and quiet presence.

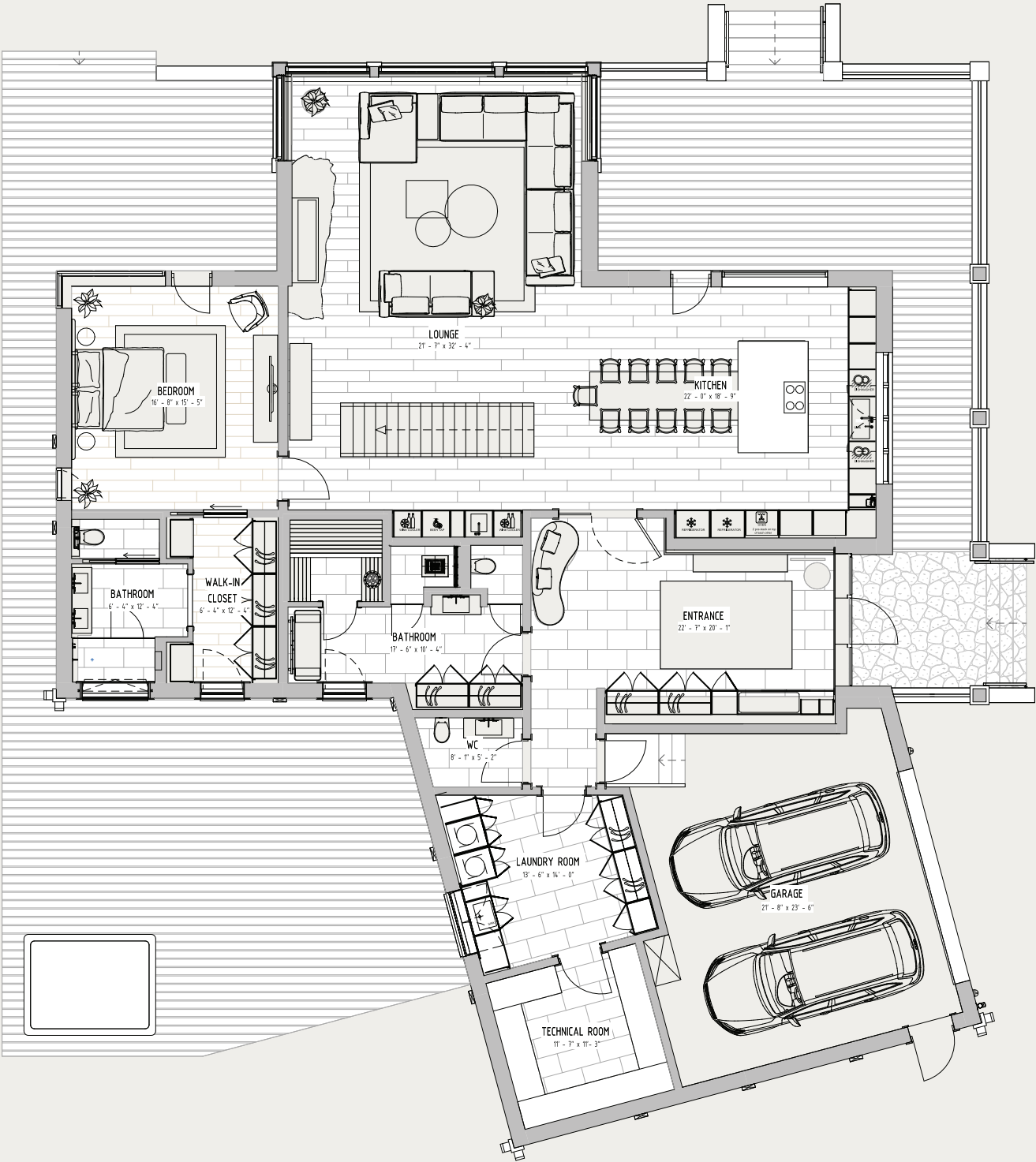
On the upper level, a welcoming bunk room continues the home's feeling of calm, with comfortable seating, a TV area, and a playful alcove.





Bathrooms

Six bathrooms reflect the same architectural discipline found throughout the house. Stone, oak, and ambient light define spaces where function and craftsmanship meet in quiet harmony.



First level

MAIN LIVING AREAS

- Entrance hall
- Open-concept kitchen and dining area
- Spacious living room

BEDROOMS & BATHROOMS

- One bedroom
- Two bathrooms + one ensuite
- Sauna
- Walk-in closet

SERVICE & UTILITY SPACES

- Laundry room
- Mechanical room
- Garage (two-car, direct entry access)

OUTDOOR AREAS

- Main deck adjoining the living and dining area
- Private deck connected to the primary bedroom
- Outdoor deck with hot tub



Second level

BEDROOMS & BATHROOMS

- Three bedrooms
- Two ensuite bathrooms
- Guest bathroom
- One walk-in closet

LOUNGE & RECREATION AREAS

- TV room
- Bunk room and play zone
- Covered balcony with mountain view
- Loft with champagne bar and panoramic views
- Overlooks great room and dramatic floor-to-ceiling windows





Big Sky, Montana

Surrounded by alpine forest and open ridgelines, the home sits on a private 2.52-acre lot within Spanish Peaks Mountain Club — a landscape defined by light, stillness, and wide-open space.

Architecture and mountain terrain exist in quiet dialogue — each enhancing the other's permanence and calm.



Close to Everything, Yet Beyond It All

Only 8.5 miles from Big Sky Resort and 45 miles from Bozeman Yellowstone International Airport, the property offers both privacy and convenience.

The home is 4.5 miles from the Spanish Peaks member clubhouse. Residents enjoy access to Spanish Peaks' ski-in/ski-out slopes, golf course, and year-round trails for hiking and mountain biking.

Fine dining, boutique amenities, and Yellowstone National Park lie within easy reach, making this setting not remote, but perfectly removed.





Exclusive Listing Agent

CALLIE PECUNIES

Big Sky Sotheby's International Realty

33 Lone Peak Dr., Unit 105 | Big Sky, MT 59716

T 406.595.0755 | callie@bigskysir.com | calliepecunies.com



Property web:

lhmmontanahomes.com

DEVELOPER | LHM | lhmmountainhomes.com

INTERIOR DESIGN | 2 am Design

CABINETRY, FURNITURE, STYLING | LHM Interior | lhminterior.com

STAIRS | LHM Step | lhimestep.com

*Some images are computer renderings.

All furnishings and decor are included as seen.

© 2025 Sotheby's International Realty. All Rights Reserved. Sotheby's International Realty® is a registered trademark and used with permission. Each Sotheby's International Realty office is independently owned and operated, except those operated by Sotheby's International Realty, Inc. This material is based upon information which we consider reliable but because it has been supplied by third parties, we cannot represent that it is accurate or complete and it should not be relied upon as such. All offerings are subject to errors, omissions, changes including price or withdrawal without notice. If your property is listed with a real estate broker, please disregard. It is not our intention to solicit the offerings of other real estate brokers. We are happy to work with them and cooperate fully. Equal Housing Opportunity.





The Mountain's Finest

lhmmountainhomes.com